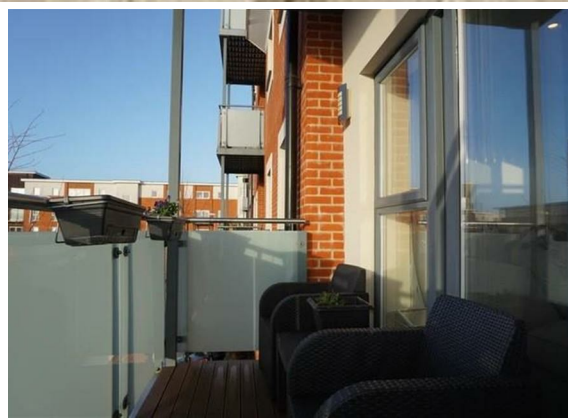


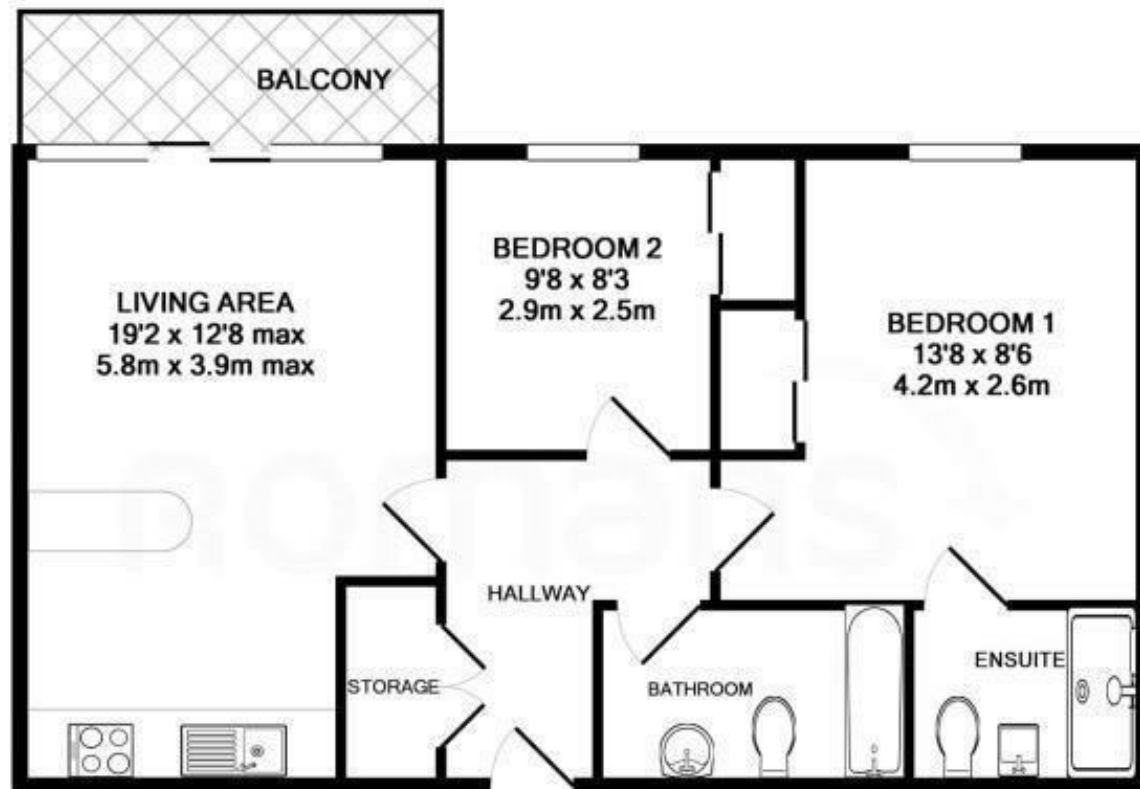


2 Bed
Flat
located in

Asking price £250,000



CHRISTOPHER ANTHONY



TOTAL APPROX. FLOOR AREA 648 SQ.FT. (60.2 SQ.M.)

Whilst every attempt has been made to ensure the accuracy of the floor plan contained here, measurements of doors, windows, rooms and any other items are approximate and no responsibility is taken for any error, omission, or mis-statement. This plan is for illustrative purposes only and should be used as such by any prospective purchaser. The services, systems and appliances shown have not been tested and no guarantee as to their operability or efficiency can be given.

Made with Metropix ©2016

Energy Efficiency Rating		
	Current	Potential
Very energy efficient - lower running costs		
(92 plus) A		
(81-91) B		
(69-80) C		
(55-68) D		
(39-54) E		
(21-38) F		
(1-20) G		
Not energy efficient - higher running costs		
EU Directive 2002/91/EC		
England & Wales		

DIRECTIONS

CONTACT

9 Evesham Walk
Basingstoke
Hampshire
RG24 9BJ

E: Sales@christopher-anthony.co.uk
T: 0118 995 2771
<https://christopher-anthony.co.uk/>



CHRISTOPHER ANTHONY